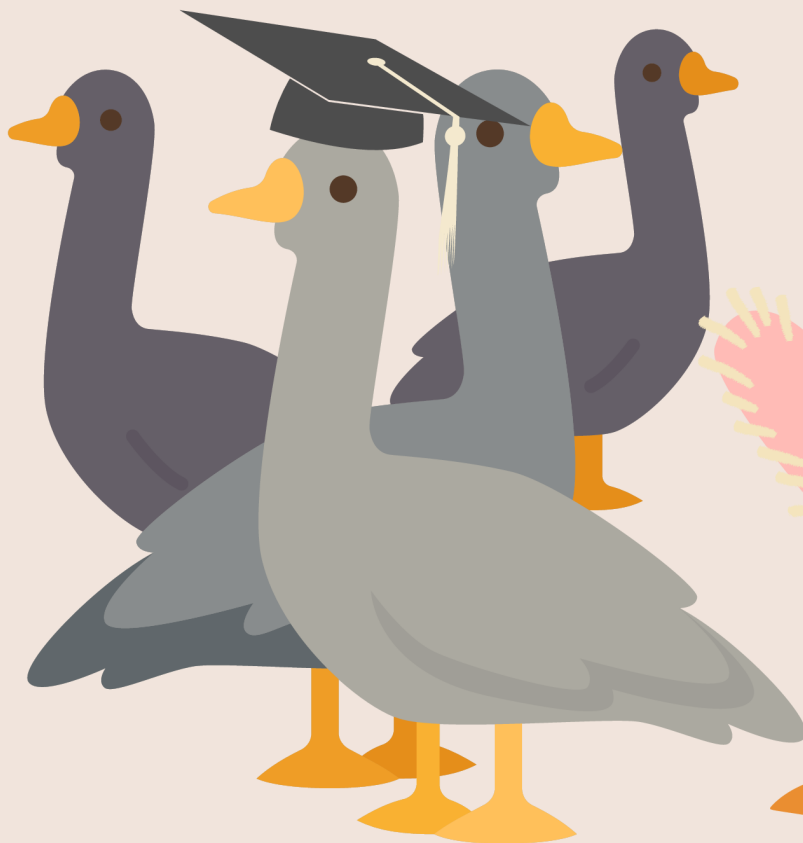




a fresher's guide to

WARWICK

by Warwick Labour



Welcome To
WARWICK



STUDENT UNION



Warwick Students Union is one of the most political in the country. It is made up by multiple areas and teams, but we will focus on the areas where student politics is most involved.

Student Officers exist in two forms, full time and part time. Full time officers are elected in spring and their role is a full time employed job, and they run the union. Part time officers are not paid or officially employed and their roles exist more so to be representative of certain student groups, and hold events/ be the point of contact for those individuals.

The SU puts on events such as Skool Dayz, POP!, and vintage/fresh fruit and veg stalls. They own outlets like The Dirty Duck, Curiositea, and Terrace Bar, all great places to hang out and grab a bite/ drink. The SU is not the same as the University and are ran by different stakeholders. Remember to buy your tickets for SU club nights in advance, as they do run out.

Recent successes for the left at Warwick SU have included, reaffiliating with the NUS, securing a real living wage commitment at the SU and ensuring solidarity with Palestine is SU policy.

SOCIETIES AND EXECS

Your first step before joining any societies is to purchase your Societies Federation Membership, which is £16 for undergraduates. Though this is not cheap, it has been reduced this year and is the only way to join a society.

Once you're in the federation, you can join any society. Most societies may charge around £3-5 to join, however, Warwick Labour is completely free! We don't make any money from our members joining us.



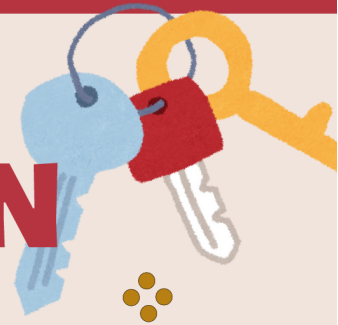
As a member of a society, you will receive their emails and be able to attend their events, such as circles, ball, bar crawls and much more. It also allows you to vote in their society exec elections, or even run for an exec role yourself.

Executive committees, are the groups of students who run each society. Every executive must have a President or Chair, Treasurer and Welfare Officer. Some societies have small execs and some have larger ones, for example Warwick Labour's exec can reach 30 people, including Freshers Representatives.

If you're a fresher who may be interested in becoming a Freshers Representative this year, then look out for our Instagram posts and emails, which will provide more information soon.



ACCOMMODATION AND FRIENDS



WESTWOOD

There are many different Warwick accommodations, and hopefully you got one from your list of six. All are walkable to campus, but you're going to need good shoes if you're in one slightly further like Westwood or Lakeside. If you're in an accom like this, we'd recommend packing a lunch when you have lectures as it can be annoying yo-yo-ing back and forth. forget your key fob!



ROOTES

You may not stay friends with everyone you meet in freshers, but that doesn't mean you shouldn't try to meet as many people as you can! The people you live with may turn out to be your greatest friends or you might just be neighbours. Go to events by the SU, uni and societies you are interested in with your flatmates. If you ever feel lonely in freshers, which of course can happen - it's a whole new environment - don't be intimidated to knock on the door of a flatmate; chances are they're feeling the same way.



TOCIL

Reminder, if there are pres going on in your kitchen then you're invited! You should never feel kicked out of your own space. The kitchen and common rooms are for everyone; and especially in freshers, it is the place to mingle, meet the people you are living with, and to solidify friendships.



CRYFIELD



ACCOMMODATION AND FRIENDS

CLAYCROFT

It's not important to be thinking about your accommodation next year, when you've barely moved into your first year accom! These things always sort themselves out. Enjoy your first year flat as it's only yours for this year.

JACK MARTIN

Feeling unsafe or signled out in your accom is unacceptable. Speak to the Residential team or Community Safety team if you feel this way as you may be able to move accoms. For serious matters, report to Warwick's Report and Support network.

There will be accommodation checks by the Residential team, but they will notify you of this by posters in your communal areas. Watch out for these! Your kitchen will be cleaned weekly, and if in shared toilets these will be cleaned daily/weekly too. But don't be the annoying flat mate! Keep your communal spaces clean and tidy. It is your responsibility to take the bins out too, which can be a jump scare for some! The Residential team and Community Safety team have numbers, which will be provided in your accom fliers, are usually always around to help with anything that goes wrong or is broken.

If you forget/ lose your key fob, there are plenty of places to get a new one. Senate house is open until 6pm, your Residential Hub from 9am until 5pm (4pm on Fridays), and the Community Safety Hub is open any other time. Return your fob if you find it.

LAKESIDE + HERONBANK

BLUEBELL

PUBS

Try out Warwick SU's very own Dirty Duck!



Right in the heart of the SU, the Dirty Duck is a great place for drinks and food as it's so convenient to get to. Every Thursday The Dirty Duck do a quiz (which you have to get to early or you won't get a seat), and Wednesday is karaoke night! Both an excellent night with your mates.

SKY BLUE TAVERN

Sky Blue Tavern, in Coventry, is perfect for any of you football fans. This pub has delish Indian Grill food and is the only dedicated Coventry City FC pub in the town.

Last year we held our annual Christmas meal here.



SPOONS

The Benjamin Satchwell is Leamington's Spoons. Slap bang in the middle of Parade, you will definitely find yourself here post freshers as it is a 2nd and 3rd year's favourite spot.

The Old Library, just down Parish Church is another great pub in the heart of Leam, and a staple to Warwick Labour bar crawls.



Disco Dave plays the best tunes of the week every Weds in POP!. Get there for 12am where Baywatch is played, and leave at 2am where the Christian Union provide hot chocolate and biscuits for your walk home to accoms.

DON'T FORGET YOUR STUDENT ID FOR THE SU AND YOUR ID FOR OFF CAMPUS!

CLUBS

Weekly Club Timetable



Monday

KASBAH - COVENTRY



Thursday

THE YARD - COVENTRY

Tuesday

SMACK - LEAMINGTON

The Warwick Week cannot be legally recommended but enjoy your fresher's how you want to!

Friday

NEON - LEAMINGTON



Wednesday

POP - COPPER ROOMS SU



Saturday

SMACK/ KASBAH





CIRCLING



Probably the craziest thing you will ever do

Circling is an experience we would highly recommend you to come to! It's a great way to make friends over drinking games, and mingle with the society.

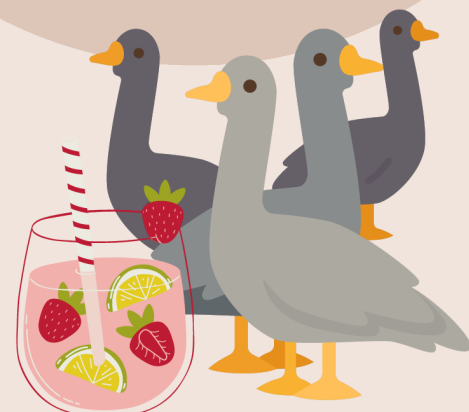
about



PURPLE

Cider, beer and ribena. It will 100% become your drink of choice, and stain every last white piece of clothing you own.

Don't be daunted! It's a lot of fun! But if you need a time-out or are just way too confused, ask the welfare or social secs of the society and they will help you. And circling isn't the only way to get involved with a society.





COVENTRY



COVENTRY CATHEDRAL

Coventry is a city, meaning it's got great connections and there's a lot to do. As an old city, there are plenty of touristy things you may want to visit, including the historic Coventry Cathedral and great free parks such as War Memorial Park and Hearsall Common. For sports fans, you may want to visit the Arena.

Coventry probably has the best shops: a Primark, M&S, Waterstones. And so a shopping trip to Cov is always a good idea when you're in need of a treat.

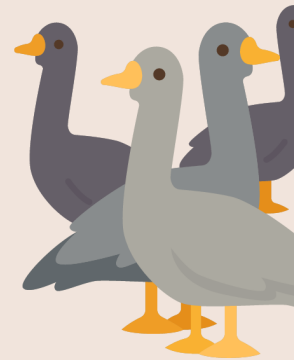
Sometimes, when applying to a University, it can be easy to skip over where the campus is actually situated. Unfortunately, if you are a major fan of Warwick town, you will be (momentarily) disappointed as the University of Warwick is actually in a place called Canley, just south of Coventry city, which is even better!

Despite being so close in proximity, Coventry University and Warwick don't often mix, but the benefits definitely do. There are often lots of student friendly events in Coventry and the deals extend to there too.

COVENTRY SHOPPING



You may want to live in Coventry next year. The houses there are typically nicer than what you would find in Leamington and you are right on the doorstep of Coventry rail station which has easy connections. The buses to use for Coventry are the National Express, which are the 12X and the 11 from campus. The best part about living in Cov, and Canley is that Zarah Sultana will be your MP!



LEAMINGTON SPA

PARADE

Leamington Spa is one of the most popular locations for Warwick students to live after their first year, and is a great place to be. Compared to Coventry, which is a city, Leamington is a large town, and has a good community feeling. Be sure to join ACORN when first moving here, this is the community union, and is especially useful since you will likely be renting a house of multiple occupancy. Always join a union!



From South Leamington the bus takes around 35 minutes to drive to campus, and you're relatively likely to get a seat. However, the trip from North Leamington is closer to 20/25 minutes, but the buses are much busier! South Leamington is where you will find more students, since it is a cheaper location. North Leamington is more expensive, though you will certainly find students here too.

The Parade is the main place to be in Leamington, with most bars, pubs and restaurants being on the parade, or on roads just off the parade. For the clubs in Leamington, see our section on clubs. The River Leam runs through the south section of the parade, in this area you will find Jephson Gardens, Pump Room Gardens and Victoria Park, which are great places to walk, run or chill in, especially in summer.



OLD LIBRARY

Warwick Labour's annual ball in 2024 was held in Jephson Garden's Glasshouse, and most of our bar crawls, off-campus circles and charity shop crawls, will be held in Leamington. In Leam, you will also find cinemas, small theatres, cafes, amazing takeaways, banks, lots of churches, gyms, leisure centres and a canal. 'Live, Laugh, Leam'.



JOBS

Joining a union is a crucial step for anyone working, especially if you're employed by a large multinational corporation. Even if you believe you will never benefit in your job from being unionised, it's worth its weight every time. Union membership gives you so many benefits, this can include, advice surrounding work and pay, protection and advice against any problematic employers, union voting rights to benefit your industry and most of all collective bargaining. Look out for one of our informative union events to find out more!

Leamington and Coventry are home to a lot of businesses, big and small, and so the search for jobs would seemingly be easy. However, there are also a lot of young people searching for work, and so, it's quite difficult at times.

Our advice for finding work would be to get in there early and try and find a job ahead of time, or transfer from a previous place of work. Additionally, don't always be too picky with work, as long as you're comfortable and not overwhelming yourself, then many places and industries can be good for part-time work.

Though Leamington and Coventry have many places to work respectively, it is also a good option to seek work, or remain working on campus (if you have previously). Furthermore, some people may find work in Coventry, Leamington, Kenilworth or Warwick, despite living elsewhere and choose to commute. Admittedly, these are less common and ideal situations, but just bear this in mind if you reach a tricky point in finding work in the area you live.



WELFARE

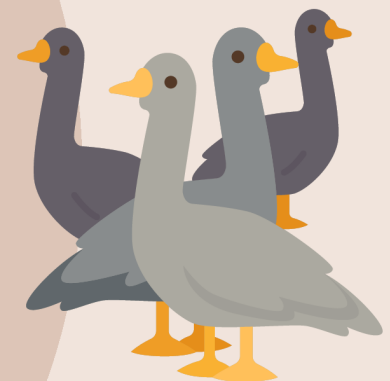


There are many pieces of welfare advice that someone who's further along their university journey, or graduated could give you, whether it relate to simple things like cooking well, keeping your room clean, drinking the right amount or shopping smartly. However, we will try to give you advice on the more important issues, that you may not have considered.

Firstly, not everyone will get along with their flatmates. This doesn't mean you move in and have a huge argument and end up hating them, it more often will be that you don't really gel, and they're not your kind of people. This is much more common than you will be told, and there are many paths. Most people will end up finding course-mates who they do make friends with, spend their first year with them and end up moving in with them in second year. This is a great option. You can also use societies and their events to make friends, and once you do, you will become closer and do more and more together, until you likely move in together later down the line as well. It is also a very feasible option that you make friends with someone, they introduce you to their flatmates and you end up loving them all, in which case, it is definitely a good option to look at moving flats in your first year.

Attending lectures and seminars is important, and in first year it is easy to slack them off and go back to your room.

Try to avoid this pattern! Set a boundary that you leave your room to work for a certain amount of time daily, and don't just skip back home and go to sleep after a seminar, trust me, it's easy to get stuck into this cycle. Having said this, it is also important to consider that you don't want to go too far the other way, always being stressed by deadlines, essays and contact hours. Every now and then, it's absolutely fine to take a day off, relax and clear your head, the uni won't miss you for one day, and it's okay to take a day or two off, if you're becoming overwhelmed or overworked.



WELFARE

You should always look after your wellbeing and others. If you see someone being pressured in a club, report it. If you witness bigotry on campus, report it. There are a lot of channels at Warwick where you can be offered help and people who will work to punish bad behaviour.

Lastly, you have to stick together. People will adapt differently to the huge change that moving to University really is. For some people, they will take it in their stride and thrive here. For others, they will miss home, they will feel lonely and they will need your support! When leaving home, you also leave behind a support network that you've built for yourself over 18 years. This is why it is so crucial to build yourself a new one, whether it be friends, staff, or colleagues, you absolutely need to make sure you have people to talk to, socialise with, eat with, exercise with, drink with, and open up to. University will be a real struggle if you don't have this, so make sure you try your best to find your group, find your people, and you will be okay, trust us.





TOP TIPS



From our exec!

"Find the shortest route from your uni accommodation to cannon park. Also worth trying out campaigning when you can, I waited too long until going on my first campaigning session."



"Go to as many sports rock up sessions as possible and find the sport you like."



"Download the Moves app if you do a lot of steps! There's lots of prizes to be won, as steps make points. You do so many in freshers, it's a good time to get the app."

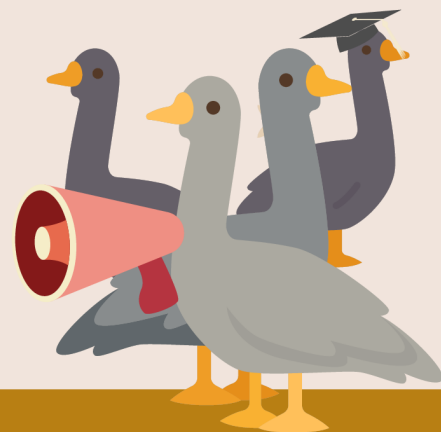


"Try out loads of societies for only one or two events, see what sticks but don't stress out about missing any events, there will be plenty of things to do throughout the year."



and a bit about

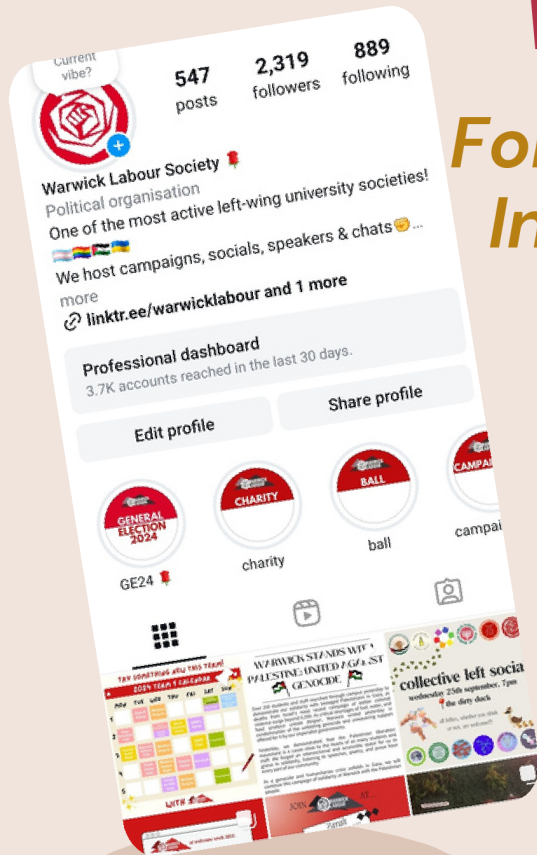
WARWICK LABOUR



WARWICK LABOUR

Who are we?

Follow us on Instagram



"Warwick Labour is one of the biggest political societies in the UK. Our uni terms are packed full with multiple events a week, and there's something for everyone. Do you want to campaign? Do you want to listen to left wing political speakers? Do you want to circle or go on bar crawls? Do you want to get drunk and debate controversial political policy? Do you want to chill out sober and watch a movie or create art? Then join Warwick Labour!"



Why Warwick Labour?

From our exec!

"An incredibly inviting community for anyone left of centre, where we challenge the embedded dismissal of socialism in Britain and look to push our state towards being of service for the many, not the few. Also circles and sports are sick."



"The people are amazing and the cause of changing Labour for the better is great."

"In Warwick Labour for Zarah Sultana and principled people committed to changing the world for the better :)"

"Great way to meet new people as there's so many types of events there's something for everyone."